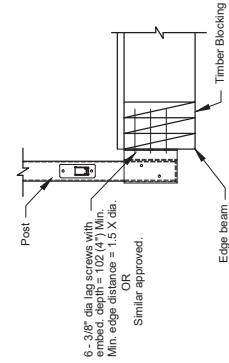
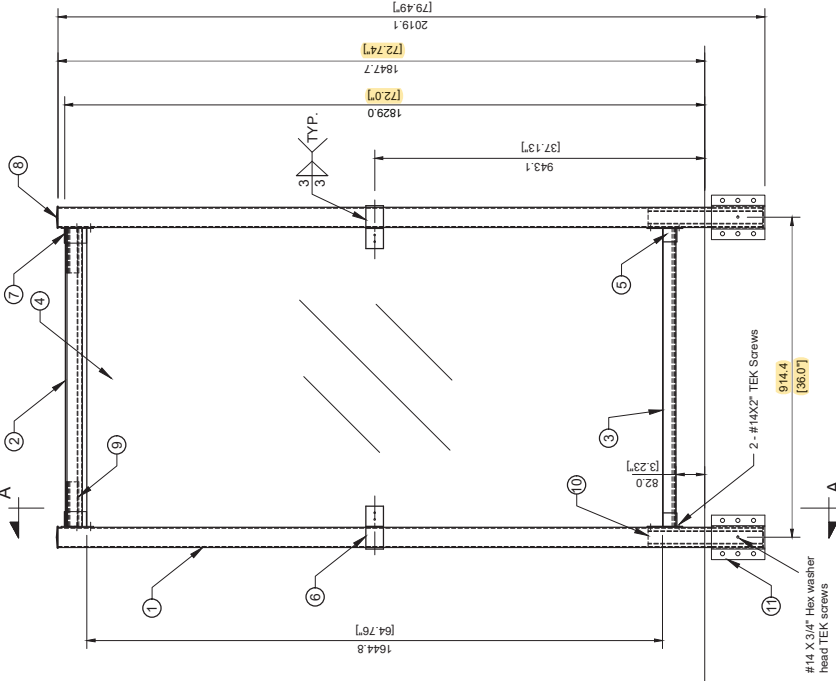




25 SEP 2023

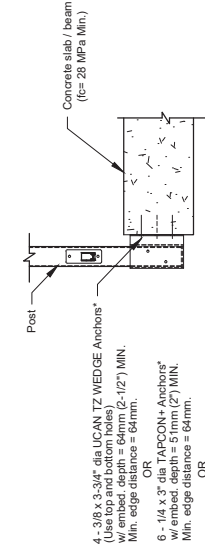
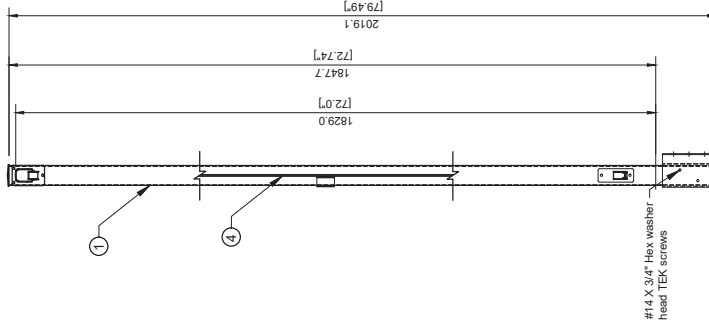
MARK	DESCRIPTION	PROFILE	MATERIAL	LENGTH	WEIGHT (kg)	QTY	TOTAL WT.
1	Post	HSS 57.15X57.15X2.5	6061-T6	2012.8	3.83	2	7.66
2	Top rail	-	6061-T6	851.3	0.87	1	0.87
3	Bottom rail	-	6061-T6	851.3	0.87	1	0.87
4	Glass	6 x 851 x 1684.8 Tempered Glass CAN/CSA S12-M100	-	-	-	1	-
5	Bottom rail bracket	-	6061-T6	-	0.054	2	0.11
6	Clip	PL 3.18 x 50.8	6061-T6	122.1	0.065	2	0.13
7	Top rail bracket	-	6061-T6	-	0.09	2	0.18
8	Post cap	-	6063-T5	-	0.04	2	0.08
9	Top rail insert	-	6061-T6	127	0.077	2	0.15
10	Post insert	-	6061-T6	327	0.32	2	0.64
11	Post bracket	-	6061-T6	152	0.07	2	0.14
							10.34



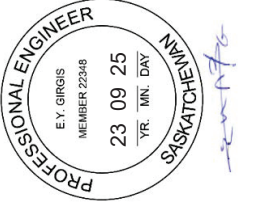
TYPICAL SIDE MOUNTED DETAIL ON TIMBER FLOOR



25 SEP 2023



TYPICAL SIDE MOUNTED DETAIL ON CONCRETE FLOOR
 *Concrete anchors specified above shall be installed in UNCRACKED concrete. If cracked concrete is encountered, installer should contact the original fabricator installer.



23 09 25



25 SEP 2023

No	DATE	REVISIONS	BY	EG
4	25 SEP. 2023	REVISED AS CLOUDED	EY	EG
3	7 APRIL 2022	ADDING DETAILS	EY	EG
2	21 JAN. 2020	ADDING EDGE DISTANCE NOTE	EY	EG
1	24 MAY. 2019	REVISED AS CLOUDED	EY	EG
0	21 MAY. 2019	ISSUED FOR FABRICATION	EY	EG
				DRAWN / CHECK

Drawing prepared by:



554 Silverado, SW, Calgary, AB
 Tel: 403.243.8888
 Email: info@plusengineering.com
 www.plusengineering.com

Client:

Home-Rail Ltd.

Drawing Title :

WIND WALL GLASS - 72" HIGH
 SIDE MOUNTED

Scale :	NTS	Drawing No.	HR5-1	REV.	4
Project No. :	1911				