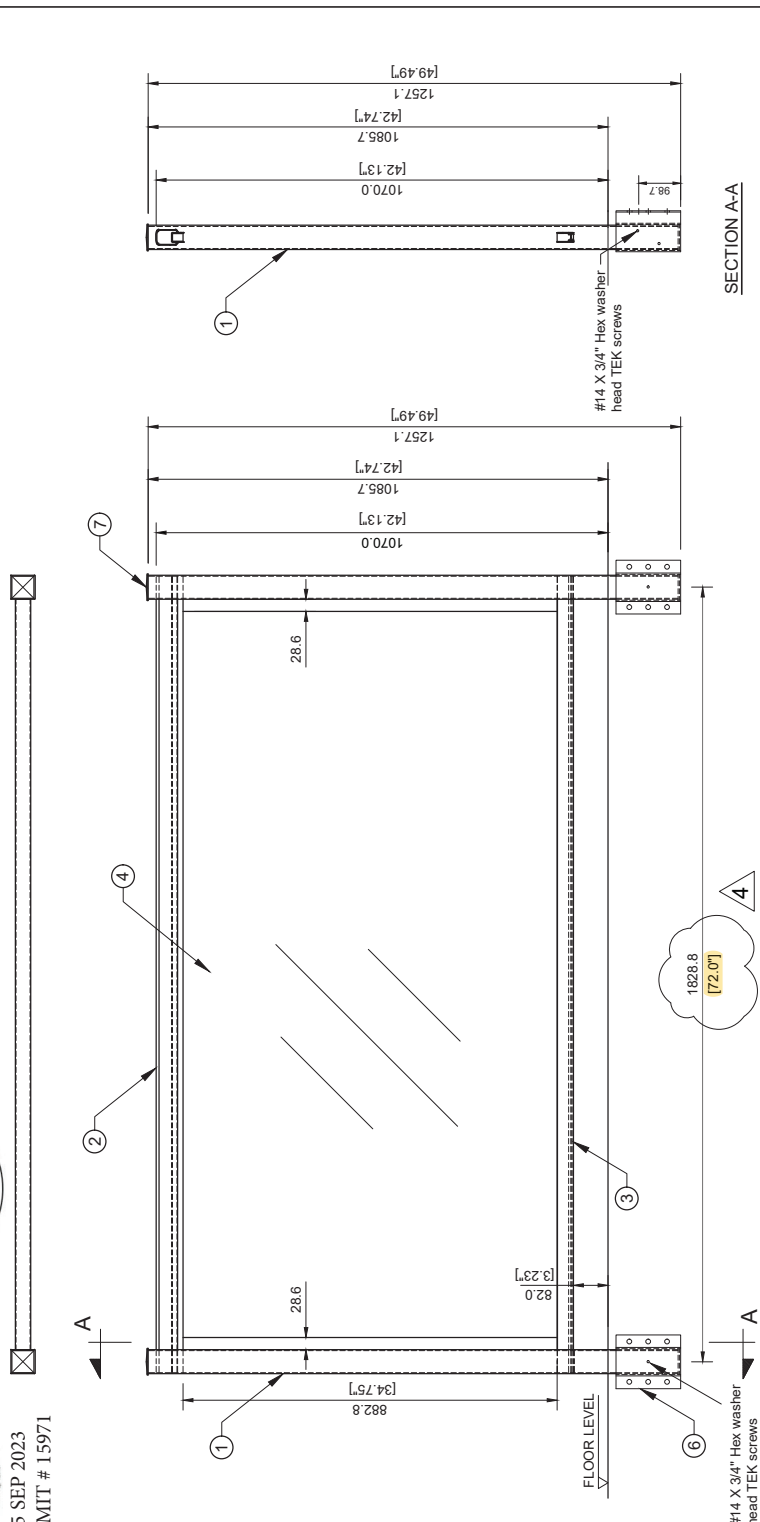
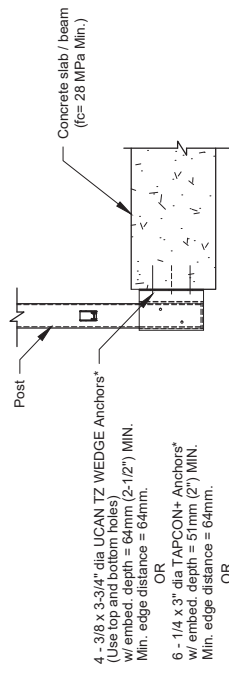
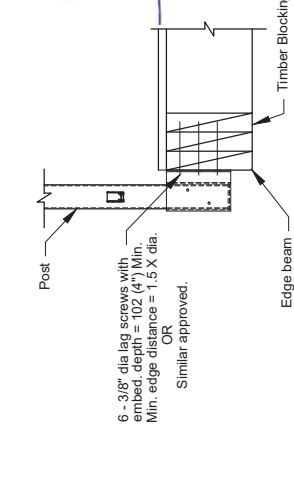


25 SEP 2023
PERMIT # 15971

MARK	DESCRIPTION	PROFILE	MATERIAL	LENGTH	WEIGHT (kg)	QTY	TOTAL WT.
1	Post	HSS 57.15X57.15X2.5	6061 - T6	1250.8	2.38	2	4.76
2	Top rail	-	6061 - T6	1575	1.61	1	1.61
3	Bottom rail	-	6061 - T6	1460	0.66	1	0.66
4	Glass	6 x 1714.6 x 930 Tempered glass conform to CAN/CSG-12-M90	4	-	-	1	-
6	Post bracket	-	6061 - T6	152	0.07	2	0.14
7	Post cap	-	6061 - T6	-	0.04	2	0.08
							7.25

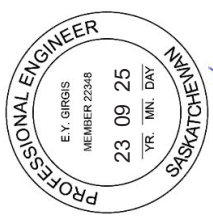


25 SEP 2023
PERMIT # 1001498



TYPICAL SIDE MOUNTED DETAIL ON TIMBER FLOOR

TYPICAL SIDE MOUNTED DETAIL ON CONCRETE FLOOR
*Concrete anchors specified above shall be installed in UNCRACKED concrete. If cracked concrete is encountered, installer should contact the engineer before installation.



25 SEP 2023
PERMIT # 7999

No	DATE	REVISIONS	DRAWN	CHECK
4	25 SEP 2023	REVISED AS CLOURED	EY	EG
3	11 APR 2023	REVISED AS CLOURED	EY	EG
2	7 APR 2022	ADDING DETAILS	EY	EG
1	21 JAN 2020	ADDING EDGE DISTANCE NOTE	EY	EG
0	21 MAY 2019	ISSUED FOR FABRICATION	EY	EG

Drawing prepared by:



554 Silverado, SW, Calgary, AB
Phone: (403) 243-8888
Email: info@plusengineering.com
www.plusengineering.com

Client:

Home-Rail Ltd.

Drawing Title:

GLASS RAIL 6mm - 42" HIGH
SIDE MOUNTED

Scale:	NTS	Drawing No.	HR4-1	REV.	4
Project No.:	1911				